

COMPANY INTRODUCTION & PRODUCT PORTFOLIO

PLP CZECH REPUBLIC

DESIGNER, MANUFACTURER AND SUPPLIER OF PASSIVE COMPONENTS FOR FIBER NETWORKS



COYOTE[®]

MICOS



Quality
Products



Excellent
Service



Precision
Engineering



Research
& Development



Product
Customization

ABOUT PLP

Founded in 1947

Headquartered
in Cleveland, Ohio,
USA

24 global facilities
with three U.S.
manufacturing plants

3,500+ employees

Customers
in over 140 countries

and we
continue on...



Communications



Energy



Electric Vehicle



Inspection Services

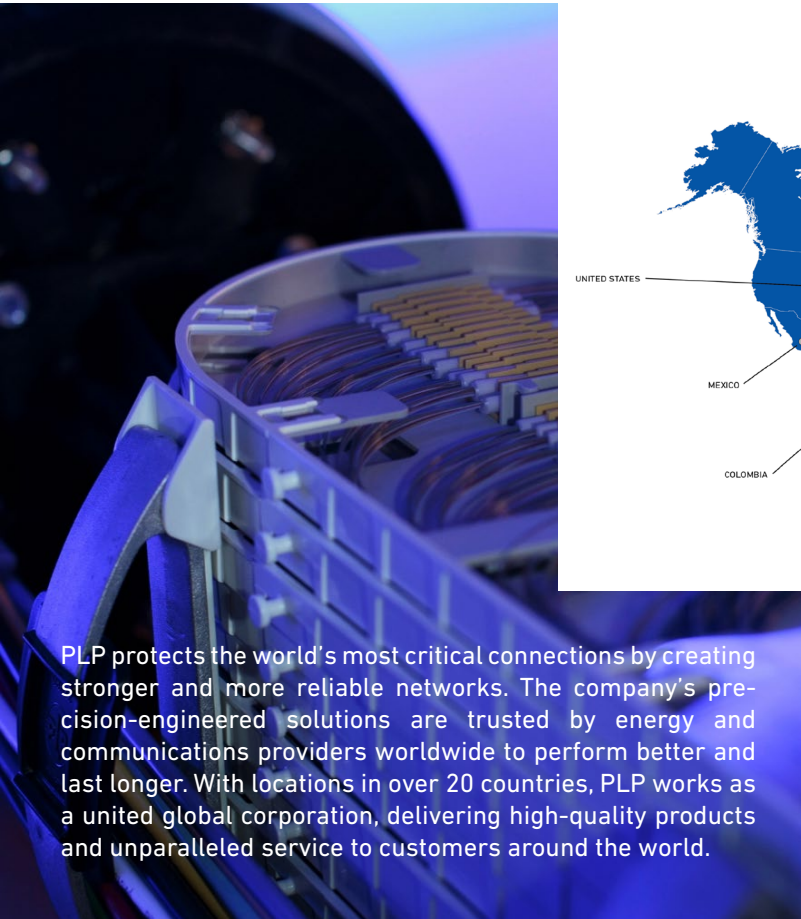


Solar



Special Industries

GLOBAL OPERATIONS



PLP protects the world's most critical connections by creating stronger and more reliable networks. The company's precision-engineered solutions are trusted by energy and communications providers worldwide to perform better and last longer. With locations in over 20 countries, PLP works as a united global corporation, delivering high-quality products and unparalleled service to customers around the world.



ABOUT PLP CZECH REPUBLIC

Founded in 1990,
HQ in Czech Republic,
Prostějov

Metal and plastic
processing

Manufacturing
and R&D

Complete FTTx solution
portfolio

EV charge stations

120+ employees

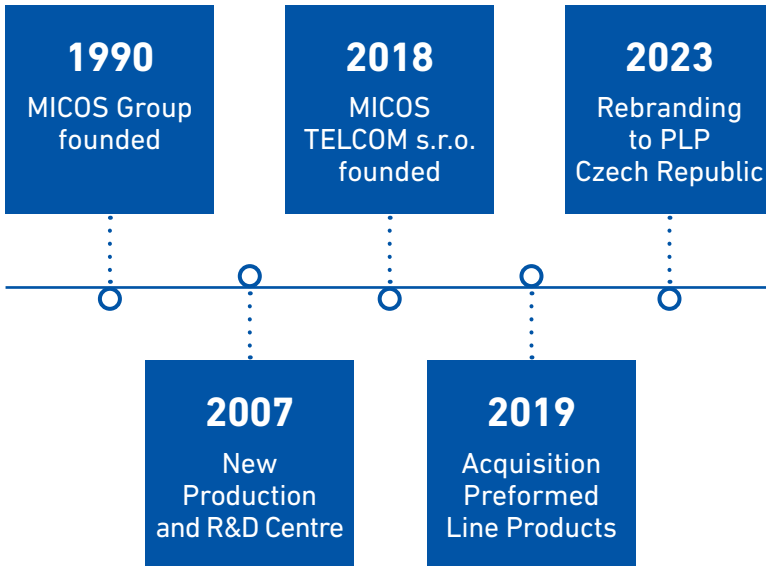
Customers in
over 70 countries



MICOS TIMELINE



A **PREFORMED** LINE PRODUCTS COMPANY



OUR CUSTOMERS



▪ Albania	▪ Estonia	▪ Ireland	▪ Netherlands	▪ Slovakia
▪ Argentina	▪ Finland	▪ Israel	▪ Norway	▪ Slovenia
▪ Australia	▪ France	▪ Italy	▪ Oman	▪ Spain
▪ Austria	▪ Germany	▪ Kosovo	▪ Panama	▪ Sweden
▪ Belgium	▪ Great Britain	▪ Latvia	▪ Poland	▪ Switzerland
▪ Benin	▪ Greece	▪ Lebanon	▪ Portugal	▪ Turkey
▪ Bosnia and Herzegovina	▪ Guadeloupe	▪ Libya	▪ Republic of Armenia	▪ Ukraine
▪ Bulgaria	▪ Hungary	▪ Lithuania	▪ Republic of South Africa	▪ United Arab Emirates
▪ Croatia	▪ Chile	▪ Luxembourg	▪ Romania	▪ United States of America
▪ Cyprus	▪ China	▪ Macedonia	▪ Russia	▪ Zimbabwe
▪ Czech Republic	▪ Iceland	▪ Mexico	▪ Saint Barthelemy	
▪ Denmark	▪ Indonesia	▪ Montenegro	▪ Saudi Arabia	
▪ Ecuador	▪ Iran	▪ Montserrat	▪ Serbia	
▪ Egypt	▪ Iraq	▪ Morocco	▪ Saint Martin	

RESEARCH & DEVELOPMENT

INTERNAL TESTING FACILITY

Research and development form the bedrock of PLP Company's commitment to innovation and growth. Through substantial investments, a culture of creativity and collaboration, and a customer-centric approach, the company's R&D initiatives drive technological advancements, deliver tailored solutions and foster sustainability. With its unwavering focus on R&D, PLP Company is poised to continue leading the industry, shaping the future and delivering value that surpasses customer expectations.

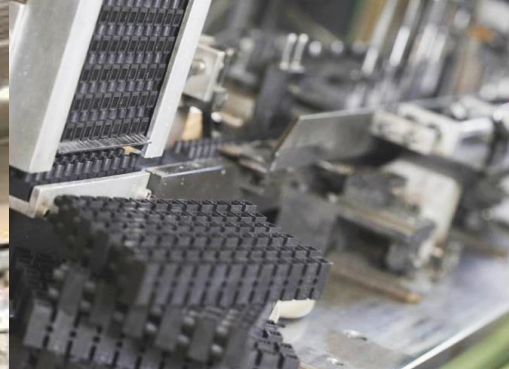


MANUFACTURING EXCELLENCE

METAL PROCESSING

The metal workshop at PLP CZECH REPUBLIC exemplifies excellence in metal fabrication, combining cutting-edge technology, skilled craftsmanship and a passion for quality. From the moment raw materials enter the workshop to the final inspection of finished products, precision and attention to detail permeate every step of the process. Through collaboration, adaptability and unwavering dedication, the metal workshop at PLP CZECH REPUBLIC continues to set the benchmark for exceptional metalworking, consistently delivering outstanding results to customers worldwide.



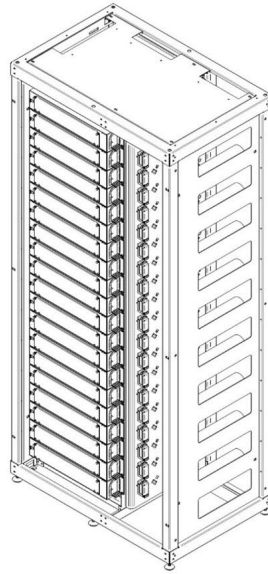
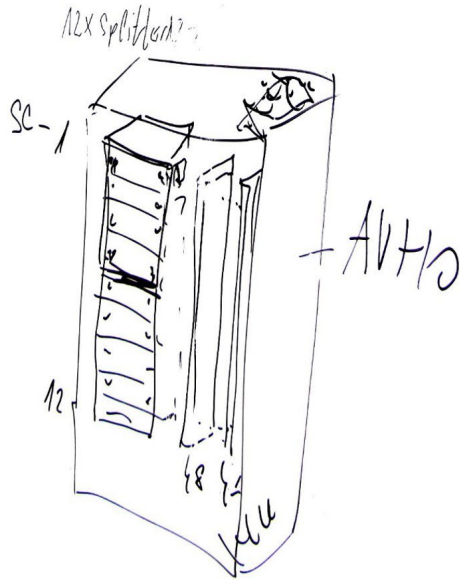


INJECTION MOLDING

PLP CZECH REPUBLIC's molding plastic production facility thrives on customization and flexibility. With a focus on customer-centric solutions, the company can accommodate a wide range of requirements and specifications. From design modifications to color variations and material choices, the facility's versatility enables it to cater to diverse industries and deliver tailored plastic components.

CUSTOMIZED MANUFACTURING

We utilise our considerable cross-discipline technical expertise and resources to offer special and completely new technical solutions according to our customers' requirements – from product development and prototyping to testing and putting into operation.



Product Customization

Research & Development

Precision Engineering

CERTIFICATION

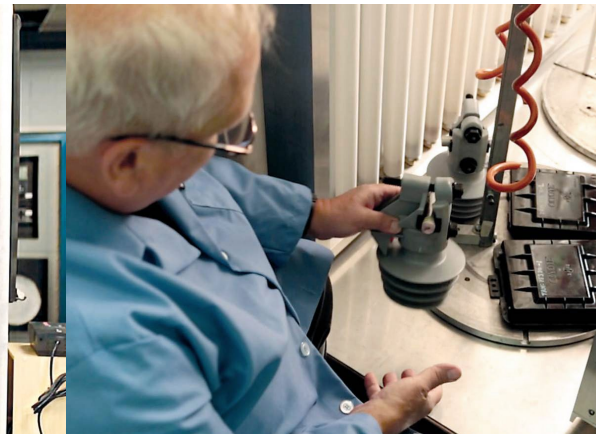


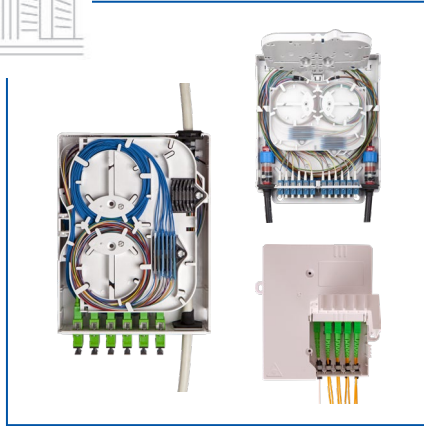
HIGH STANDARDS

Quality begins at the receipt of materials when an incoming inspection is performed. This step ensures that PLP products start with high-quality materials, supplied from certified, pre-approved vendors.

METICULOUS TESTING

During the development and production processes, we employ a variety of electrical, mechanical, chemical, functional and environmental testing methods in accordance with Telcordia GR-771-CORE Generic Requirements.



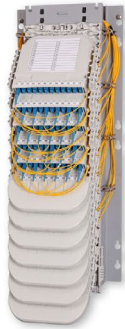


MICOS

CCYOTE®



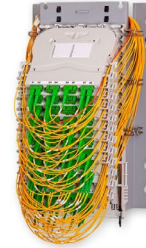
KM 4



KM 5



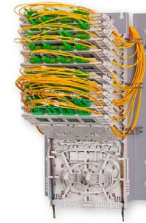
KM 6



KM 7



KM 9



- Variable capacity: ability to gradually add trays as required
- Accessible stacking system
- Significant space savings through a cascading tray solution
- Ability to mix & match the Fiber Optic Trays KM 4, KM 5, KM 6, KM 7, KM 9
- Initiative patching solution embedd and inclusive

with the stacking system

- Optional placing of PLC Splitters (outside a tray)
- Extended space for fiber reserves
- Ability to place fibers in a secondary sheath (pigtail, \varnothing 0.9 mm)
- Suitable for all types of networks
- Suitable for ribbon fibers

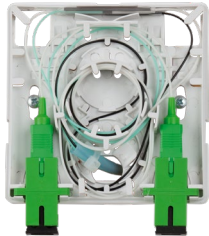


MTEH INDOOR SOLUTIONS



ORM 1

- Customer terminal point
- 4 splices
- 4× connector (SC simplex or LC duplex)



MTeH EASY

- Universal floor box
- 48 splices
- 12× SC/24× LC connector



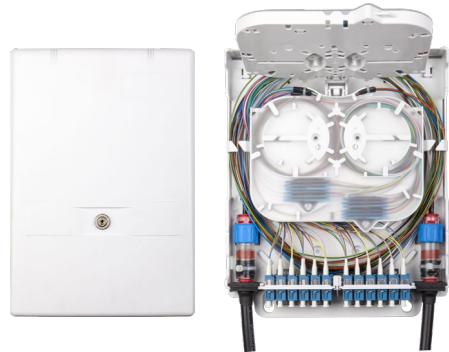
MTeH MINI

- Small compact box
- 14 splices
- 12× SC/24× LC connector



MTeH UNI

- Universal basement box
- 72 splices
- 24× SC/48× LC connector



OUTDOOR/INDOOR FIBER OPTIC BOXES



MAB

- 60 splices
- 12× SC/12× LC connector



MDB XS

- Extra small box
- 48 splices
- 16× SC/32× LC connector



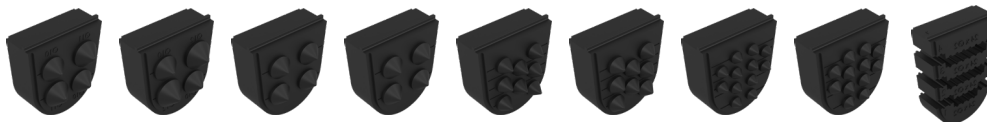
MDB S

- Small box
- 96 splices
- 24× SC/48× LC connector



MDB M

- Large box
- 144 splices
- 48× SC/96× LC connector



FIBER DISTRIBUTION HUBS



MDP OZ 144S
MDP OZ 288S
MDP OZ 432S

- 432 splices



MDP OZ 24/48
MDP OZ 48/96
MDP OZ 72/144

- 88× SC/176× LC connector



MDP S 96S 24/48
MDP S 96S SFMS

- 96 splices
- 24× SC/48× LC connector



MDP EL 144/288
MDP EL 288/576
MDP EL 432/864
MDP EL 576/1152

- 2,304 splices
- 768× SC/1,536× LC connector

FIBER OPTIC CLOSURES



COYOTE® DOME

DOME 617

- SFMS: 384 splices
- BT UO: 336 splices
- BT UO: 24× SC/48× LC connector

DOME 622

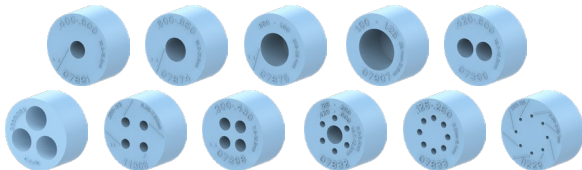
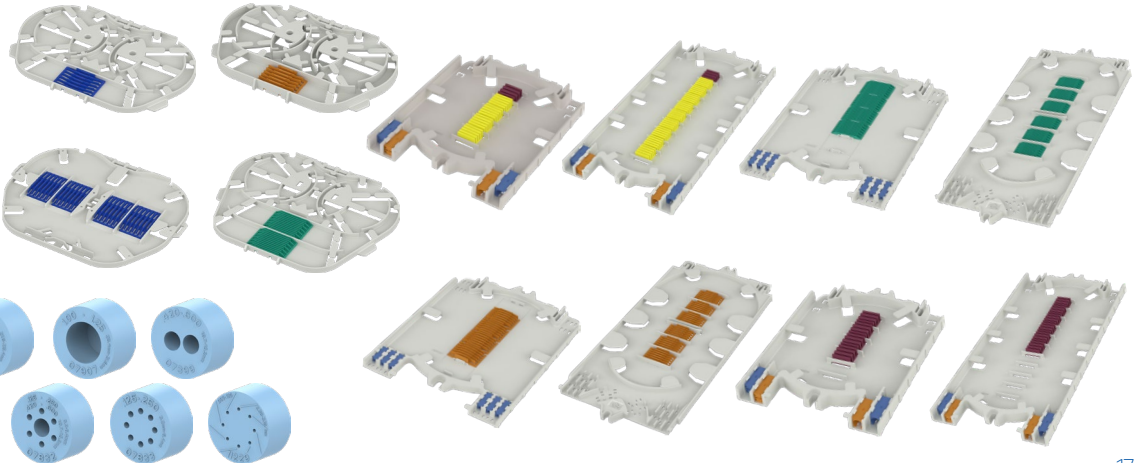
- SFMS: 576 splices
- BT UO: 504 splices
- BT UO: 48× SC/96× LC connector

DOME 919

- SFMS: 768 splices

DOME 928

- SFMS: 1,536 splices



FIBER OPTIC CLOSURES



COYOTE® STP

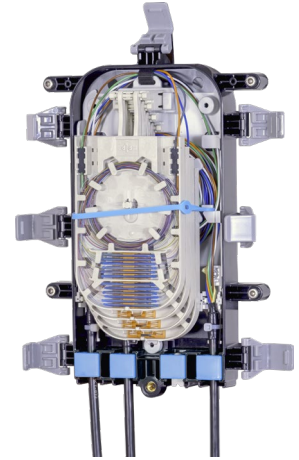
STP-JR

- 12 splices
- 2× SC/4× LC connector



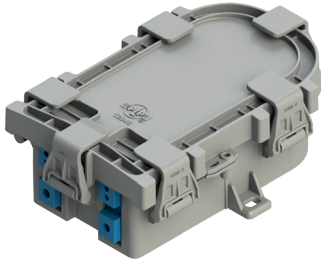
STP-L

- 96 splices
- 12× SC/12× LC connector



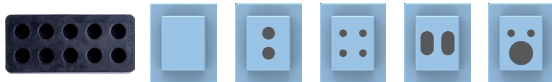
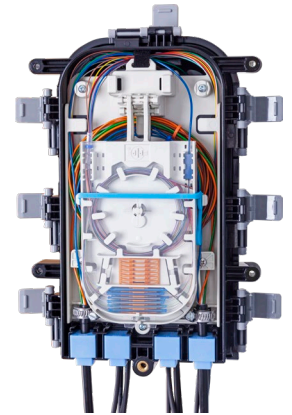
STP-MD

- 24 splices
- 4× SC/8× LC connector



STP-XL

- 192 splices
- 24× SC/48× LC connector





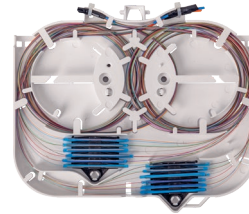
MDO 900

- 3,456 splices
- 1,152× SC/2,304× LC connector

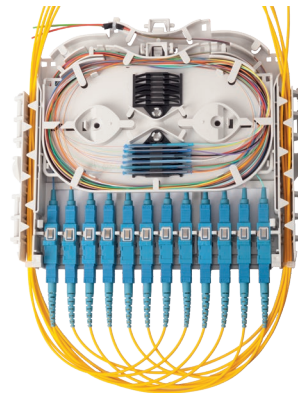


MDO 600

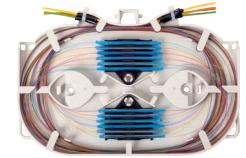
- 1,728 splices
- 576× SC/1,152× LC connector



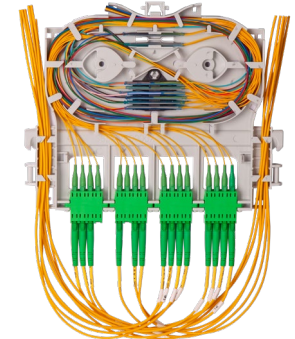
KM 4
• 24 splices



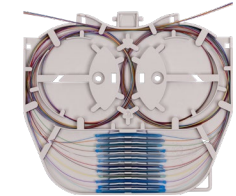
KM 5
• 12× SC/24× LC connector



KM 6
• 24 splices



KM 7
• 8× SC/16× LC connector



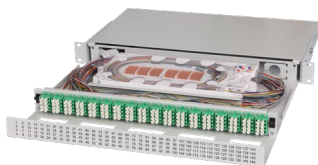
KM 9 • 12 splices

CENTRAL OFFICE



UHD ORMP 1U

- 72× SC/144× LC connector



UHD ORMP 2U

- 144× SC/288× LC connector



ORSL AP 300/ORSL AP 600



ORSL EE



ORMP 1U

- 24× SC/48× LC connector



ORMP 2U

- 72× SC/72× LC connector



ORMPV 1U

- 36× SC/48× LC connector



ORMPV 2U

- 96× SC/144× LC connector



ORMPV 3U

- 144× SC/288× LC connector

FTTX SOLUTIONS



Central Office MDO Cabinet Solution



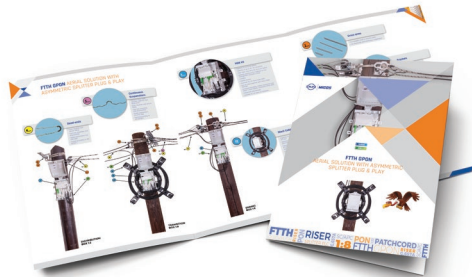
FibeRoad™ Solution



FTTH GPON Spliceless Solution



FTTH RISER Solution with Floor Box



FTTH GPON Aerial Solution
with Asymmetric Splitter Plug & Play



FTTA/5G RRH Connection Solution

PRODUCT CATALOG

 **PLP MICOS**

www.micostel.com



PRODUCT CATALOG 23

-  Fiber Optic Closures
-  Pre-Terminated Cabinets
-  NIDs
-  Passive Optical Components
-  Connectivity Solutions

GPON **SD-WAN** **FiberHub**

PRODUCT CATALOG





COYOTE® FIBER OPTIC SOLUTIONS

Fiber Optic Closures | Pre-Terminated Cabinets
NIDs | Passive Optical Components | Connectivity Solutions

FIBERLIGN® SOLUTIONS FOR FTTH OVERHEAD NETWORKS

Durable overhead lines within reach



 **PREFORMED** LINE PRODUCTS





www.micostelcom.com
www.plp.com



[linkedin.com/company/PLPMicos](https://www.linkedin.com/company/PLPMicos)



[youtube.com/@PLPMicos](https://www.youtube.com/@PLPMicos)



twitter.com/PLPMicos



[facebook.com/PLPMicos](https://www.facebook.com/PLPMicos)



